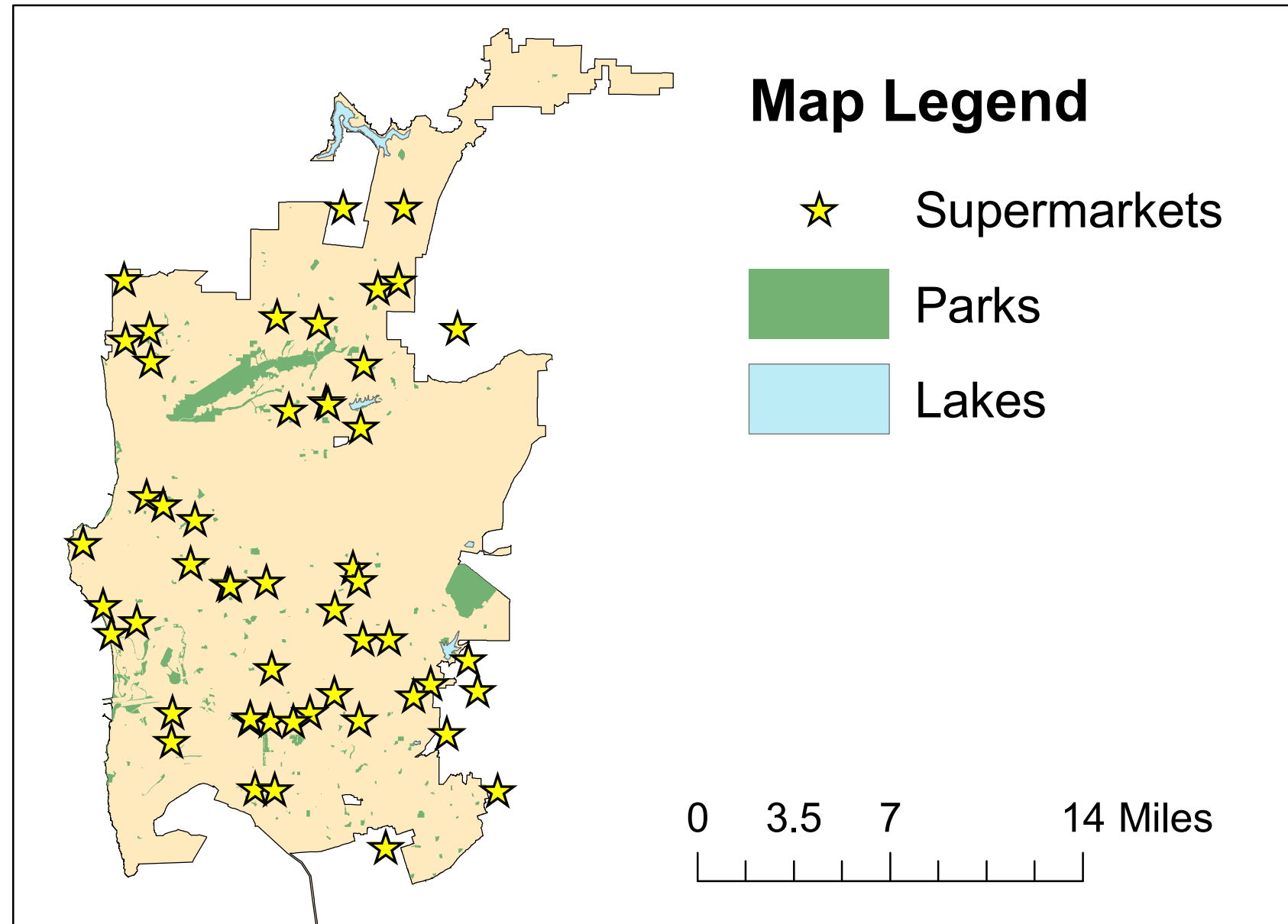


Identifying Potential Food Deserts in San Diego

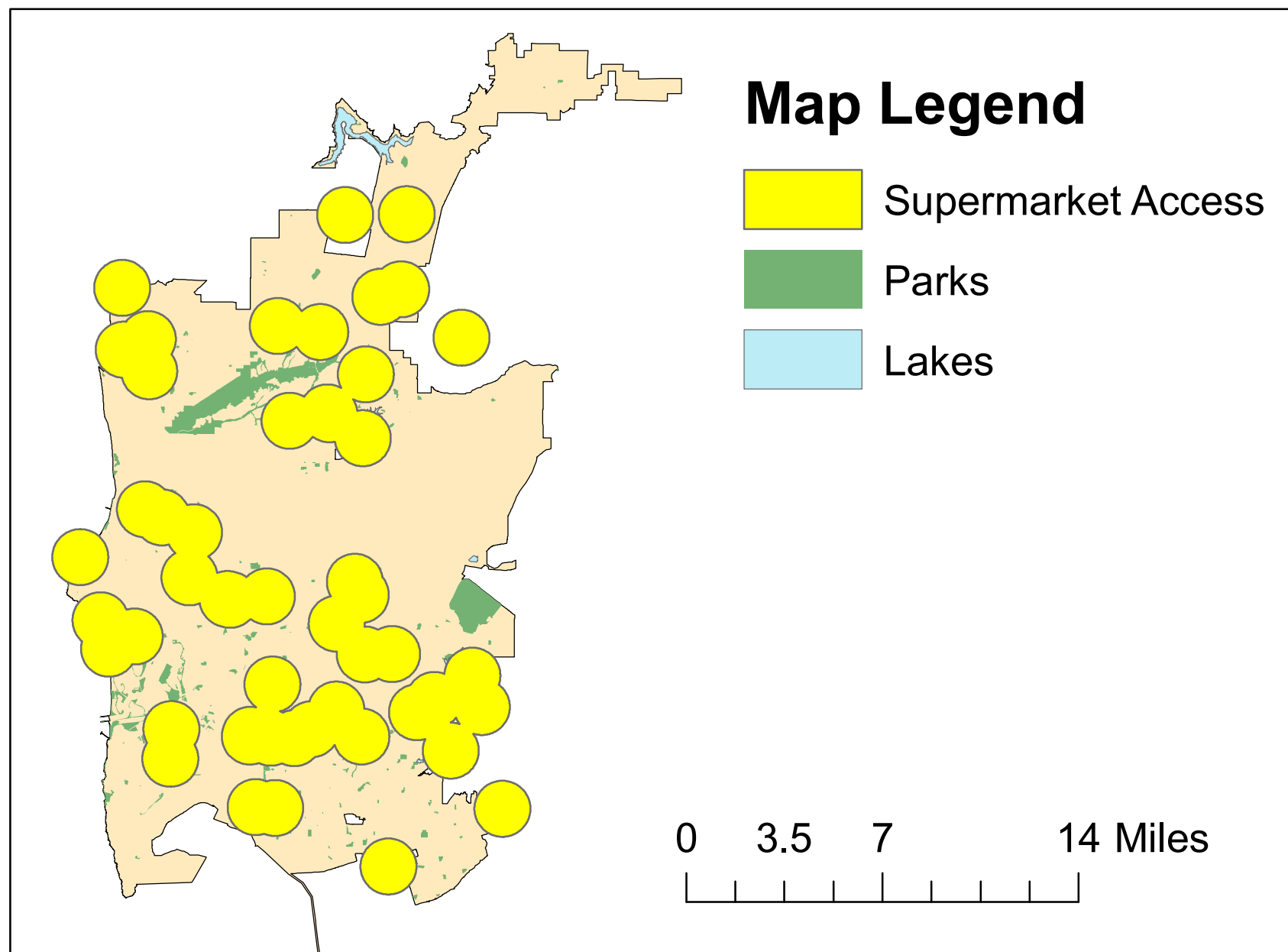
What is a food desert?

A food desert is a neighborhood or community that has limited access to affordable and nutritious foods. This is usually defined as an area that is not within one mile of a supermarket.

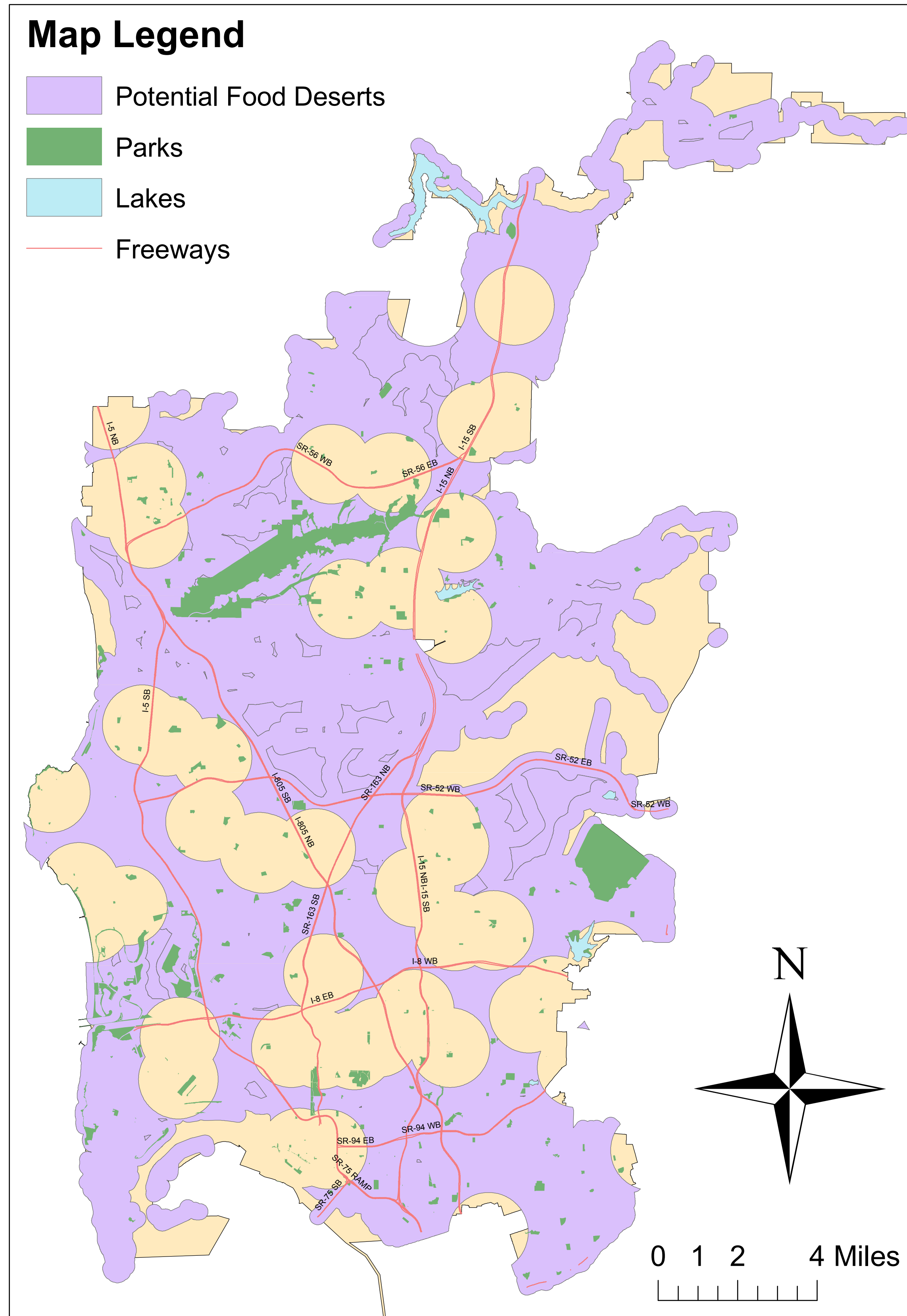
These areas have been shown to be conducive to unhealthy diets, as residents without a car or easy access to public transportation may settle on unhealthy food options, such as fast food restaurants.



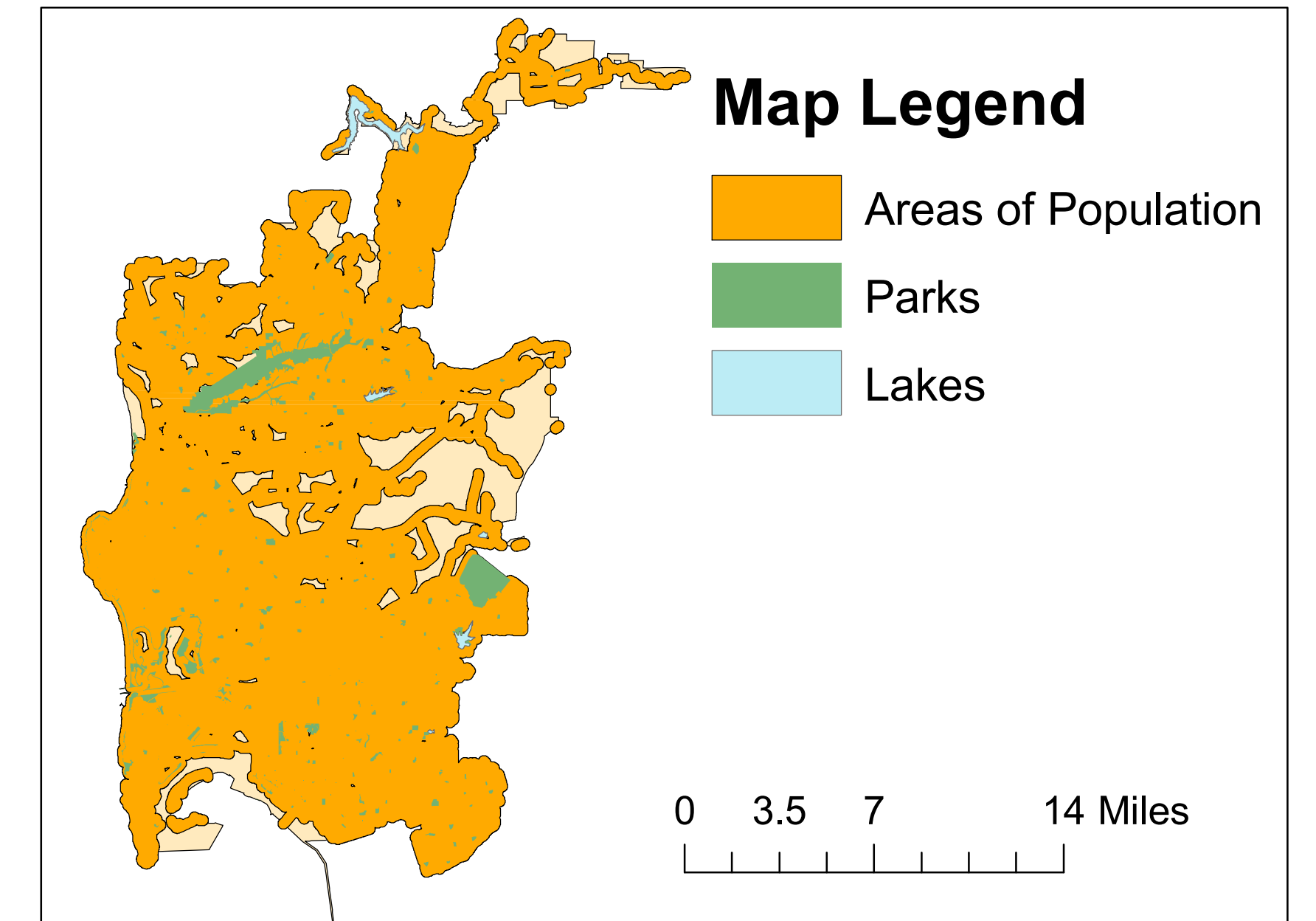
First, the major supermarkets in the city of San Diego were identified. These supermarkets were Ralphs, Albertsons and Vons. They are guaranteed to have a fresh supply of healthy produce.



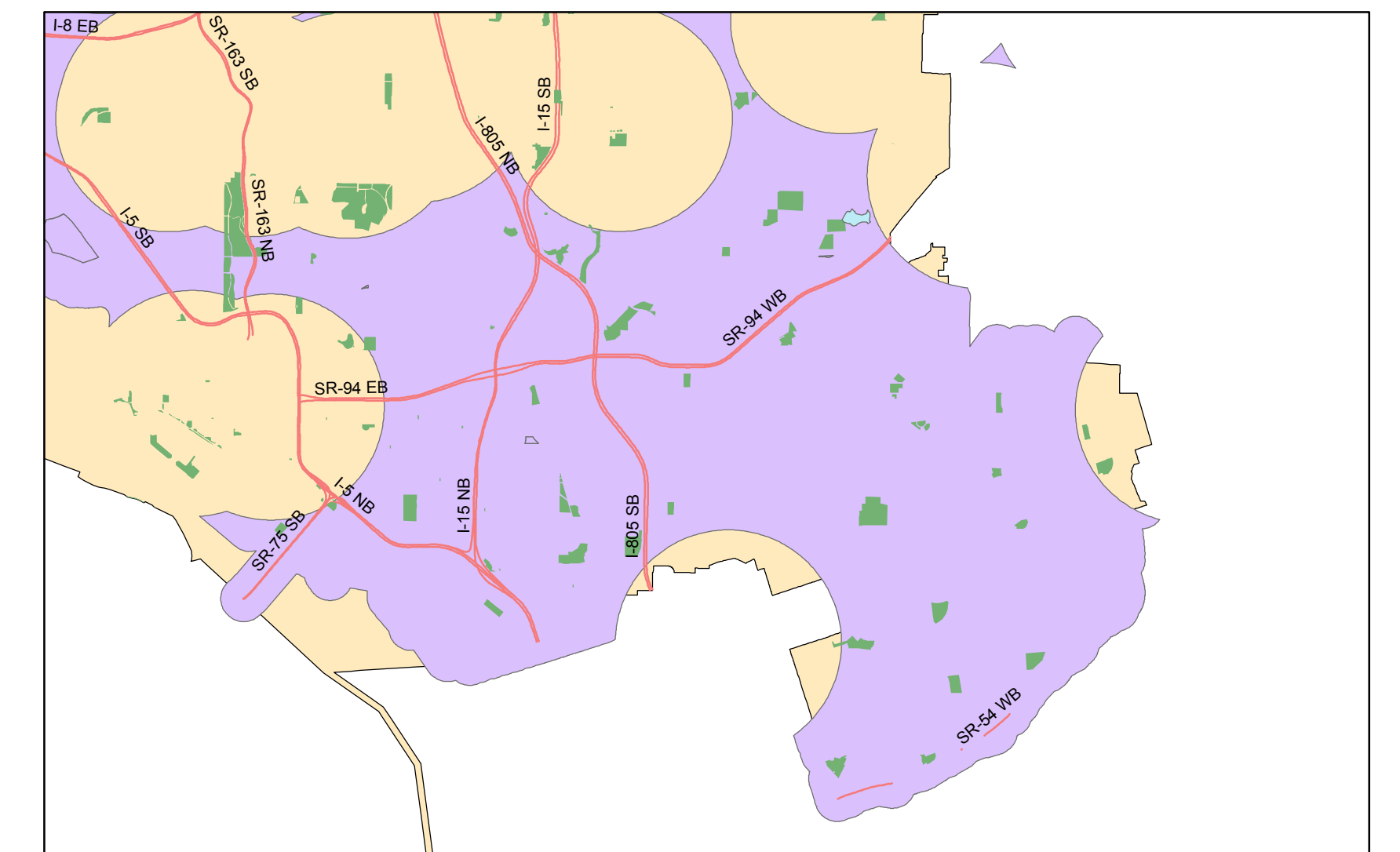
Second, a buffer of one mile was placed around the supermarket locations. These yellow areas represent areas of San Diego that have close access to a supermarket.



Fourth, the areas of coverage by supermarkets were placed over the areas of population. That overlapped area was erased, leaving populated areas of San Diego that are not within close access to a supermarket. These areas represent potential food deserts in San Diego, and may be conducive to unhealthy diets for their residents.



Third, the roads in the city of San Diego were buffered .2 miles to better define where people live.



This is a close-up of southeast San Diego, which has a dense population and a severe lack of supermarkets. The area, known for its poverty, is highly conducive to a poor diet.

This map was created for the Introduction to GIS class at Grossmont College, using ArcGIS 9.3 software.

Cartography and data analysis by William Vosti
 Geography 104: Introduction to GIS
 Instructor: Judd Curran
 Grossmont College
 Spring 2010